



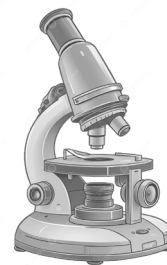
# Monitoring and Modeling CO<sub>2</sub> Fluxes in Coastal Mudflats Using Hyperspectral and Environmental Data

Hajar SAAD EL IMANNI





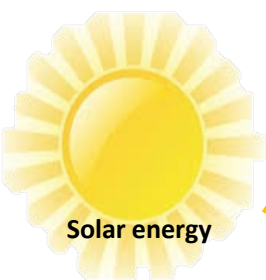
## IDEA/ RESEARCH QUESTION



Diatoms, Microphytobenthos

## METHODS/FINDINGS

## OBJECTIF



Solar energy

Energy spent in respiration

(R)

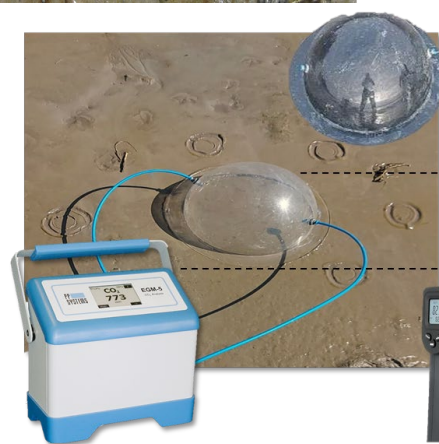
Energy stored as biomass

(NPP)



carbon  
Stock  
evaluation

Energy stored during photosynthesis  
Gross Primary Production  
 $GPP = NPP + R$



Dark chamber

Light chamber

[CO<sub>2</sub>] in ppm/s

T (°C),  
PAR (μmol m<sup>-2</sup> s<sup>-1</sup>)



Specim IQ-  
Hyperspectral Camera



Upscaling

